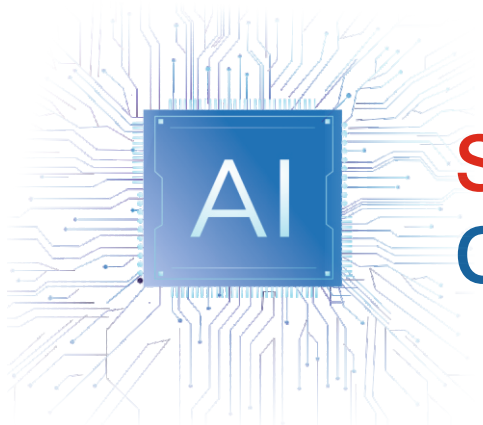


**WORLD BEST SORTING SOLUTION
SIGMA PRO**



SMART SERIES COLOR SORTER

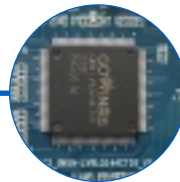
- High speed
- High efficiency
- High definition
- High precision

SIGMA PRO
📍 D-13, 4TH FLOOR GR. NOIDA
☎ +91 9871471488
🌐 www.sigmacolorsorter.com

SMART SERIES COLOR SORTER KOREAN TECHNOLOGY



High speed RGB Linear CCD sensor, 6100 pixels with excellent scanning rate, able to detect the slightest difference up to 0.05mm



Innovative high-speed GOWIN FBGA processing platform architecture supporting reverse sorting, re-sorting and size recognition methodology



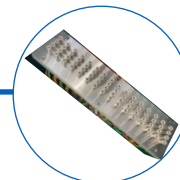
Korea ARK hiter and air cylinder with excellent durability and accuracy-filtration 0.1um mm/s, fend off mist, tinny particles, giving ejector best protection



12 inches HMI resolution 1024x768, imbedded windows operating system, capable of online support and image capturing more then 300 setting profiles storage, enable machine quick to read preset programmes



Customized LED Strips with prism configuration, making the light bright and even the best brightness providing the best defects analysis



High frequency ejector for 6 billion cycles, easy for maintenance and repairing

Technical Features



Micron camera

High resolution ultra low distortion micro camera imaging system, with electrodeless LED light source, brings un precedented recognition.



Full core upgrade

Intel Fifth generation FPGA has the advantages of faster processing spees lower power consumption and more 5table system operation.



5G architecture

Reserved 5G interface, AR/VR coordination, high bandwidth low delay, wide connection.



Intelligent dimming

Digital stepless dimming automatically matching brightness according to material change.



Intelligent magnetic control high frequency solenoid valve

high frequency low air consumption ejector flexible contact, wear-resistant super alloy material, matching with lifetime.



Human-computer interaction

Automatic acquisition of temperature, humidity, air pressure, differential pressure and other related working environment parameters to achieve monitoring and early warning.



Intelligent operating system

Firstly applied Windows 7 operating system in color sorter industry can be upgraded to Windows 8 and Windows 10 according to different applications



High speed feeding system

patented high-frequency vibrator and antioxidant anode treatment chute greatly increased through put by 20%-30% compared with other competitors.

SMART SERIES COLOR SORTER



DPLDS300
DPLDS600
DPLDS1200



DPLDS300 Stainless Steel
DPLDS600 Stainless Steel
DPLDS1200 Stainless Steel



DMLDSK1200



DMLDSK1200
(Double deck)



Office building



Factory



Factory



Factory

Sorting Solutions



Sorting Solutions

| Name | Model | Ejector | Capacity(T/h) | Optimized camyower | Voltage (V) | Power (Kw) | Compressor | Dimension (L*W*Hmm) |
|--------------|-----------|---------|---------------|--------------------|-------------|------------|------------|---------------------|
| SIGMA-1 | RGB | 64 | 0.3 to 0.5 | ≥ 30:1 | AC220V/50Hz | ≤ 1.5 | 10HP | 955*1630*1550 |
| | RGB | 80 | 0.3 to 0.6 | ≥ 30:1 | AC220V/50Hz | ≤ 1.8 | 10HP | 1045*1630*1550 |
| | RGB | 96 | 0.5 to 1 | ≥ 30:1 | AC220V/50Hz | ≤ 2.0 | 15HP | 1045*1630*1550 |
| SIGMA-2 | RGB | 160 | 0.5 to 5 | ≥ 30:1 | AC220V/50Hz | ≤ 2.5 | 15HP | 1330*1630*1550 |
| SIGMA-3 | RGB | 192 | 0.5 to 2 | ≥ 30:1 | AC220V/50Hz | ≤ 2.6 | 20HP | 1700*1630*1550 |
| SIGMA-4 | RGB | 256 | 0.5 to 3 | ≥ 30:1 | AC220V/50Hz | ≤ 2.8 | 25HP | 2015*1630*2030 |
| SIGMA-5 | RGB | 320 | 1 to 4 | ≥ 30:1 | AC220V/50Hz | ≤ 3.0 | 30HP | 2330*1630*2030 |
| SIGMA-6 | RGB | 384 | 1 to 5 | ≥ 30:1 | AC220V/50Hz | ≤ 3.6 | 30HP | 2650*1630*2030 |
| SIGMA-7 | RGB | 448 | 1 to 6 | ≥ 30:1 | AC220V/50Hz | ≤ 4.0 | 40HP | 2980*1630*2030 |
| SIGMA-8 | RGB | 512 | 1 to 7 | ≥ 30:1 | AC220V/50Hz | ≤ 4.6 | 40HP | 3280*1630*2030 |
| SIGMA-10 | RGB | 640 | 1.0 to 8 | ≥ 30:1 | AC220V/50Hz | ≤ 5.5 | 50HP | 3900*1630*2030 |
| SIGMA-12 | RGB | 768 | 1.0 to 9 | ≥ 30:1 | AC220V/50Hz | ≤ 7.0 | 50HP | 4700*1630*2230 |
| SIGMA-S300 | Belt Type | 64 | 0.1 to.5 | ≥ 30:1 | AC220V/50Hz | ≤ 3.0 | 10HP | 3100*820*1660 |
| SIGMA-S600 | Belt Type | 128 | 0.5 to 1 | ≥ 30:1 | AC220V/50Hz | ≤ 3.0 | 15HP | 3100*1130*1660 |
| SIGMA-S1200 | Belt Type | 256 | 0.5 to 2 | ≥ 30:1 | AC220V/50Hz | ≤ 3.0 | 20HP | 3400*1750*1715 |
| SIGMA-SK1200 | Belt Type | 120 | 0.5 to 1.5 | ≥ 30:1 | AC380V/50Hz | ≤ 5.5 | 15HP | 4390*1930*2050 |
| SIGMA-SK1200 | Belt Type | 240 | 0.5 to 2.2 | ≥ 30:1 | AC380V/50Hz | ≤ 9.5 | 25HP | 5215*1930*3095 |

